

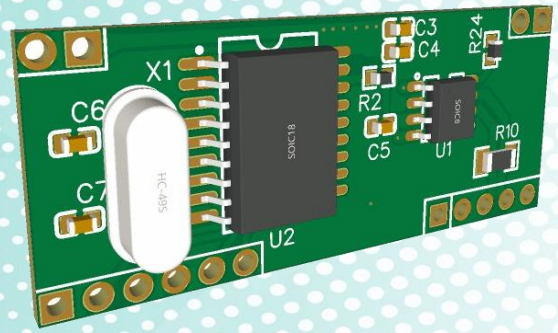


Power Meter Monitor

Model: PMM0911

Document version: 1.2

Date: October 2020



SPI to CAN BUS Converter Module

KEY FEATURES AND SPECIFICATIONS

- **Support CAN V2.0B**
0 – 8 byte length in the data field
Communication speed: 1MB / s
Standard and extended data and remote frames
- **High-Speed SPI Interface (10 MHz):**
SPI modes 0,0 and 1,1
- **Low power consumption:**
Operates from 3V to 3.6V and from 4.5V to 5.5V
5 mA active current (typical)
1 µA standby current (Sleep mode)
- **Protected from Overvoltage Line Faults up to ±60V**
- **±25kV ESD protection**
- **120 Ohm terminal resistors.**
- **Operating temperature: -40 to 80C.**
- **Module size: 43mm X 18mm X 5mm.**
- **Vertical and horizontal mounting options, compatible with standard DIP/SIP pinout**
- **RoHS Compliant**
- **Proven PCB Layout**
- **Fully Assembled and Tested**

DESCRIPTION

PMM0912 is an SPI to CANBUS converter module via LTC2875 Transceiver and MCP2515 controller which allows ICs to use CANBUS differential signaling for robust long-distance serial communication. This module allows for data transmission and communication of a CPU/MCU with any CANBUS device.

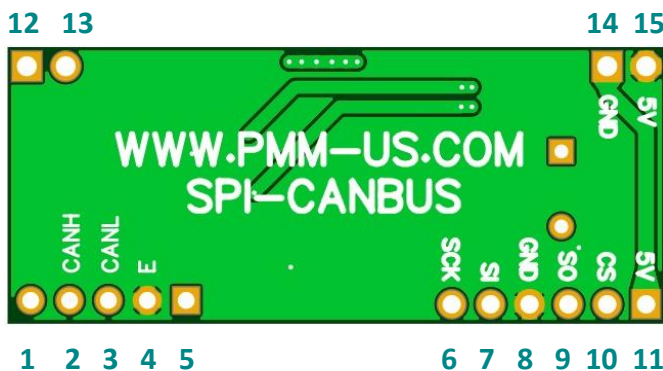
This module can operate normally with a voltage range of (3V to 3.6V) or (4.5V to 5.5V) and needs an external power supply.

WIRING PMM0911 MODULE

The Two differential data lines (labeled as CANH&CANL) on the output side of the module are connected to the communication network , the wiring should be straight through, where CANH on one end should be connected to CANH on the other end and CANL connects to CANL

The wires should ideally be twisted and shielded within one cable, this method is important as it runs for longer where there is a lot of electrical noise.

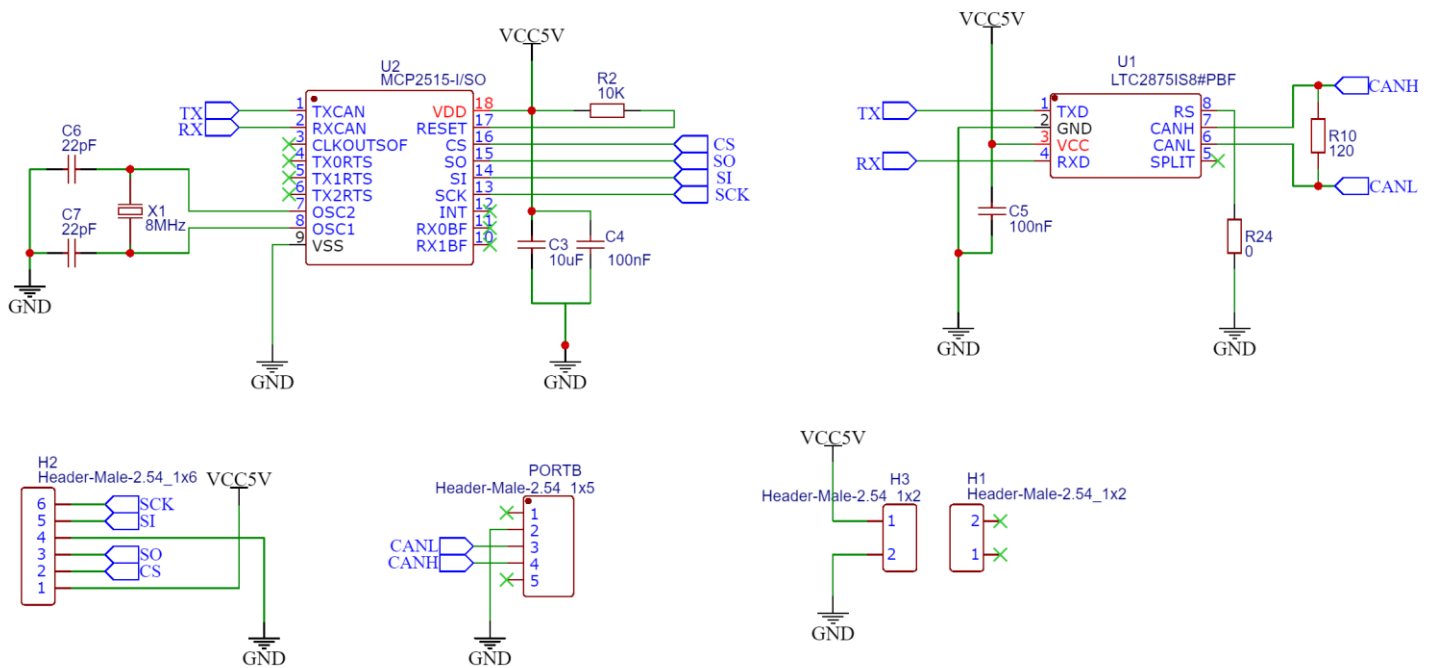
BOARD PINOUT



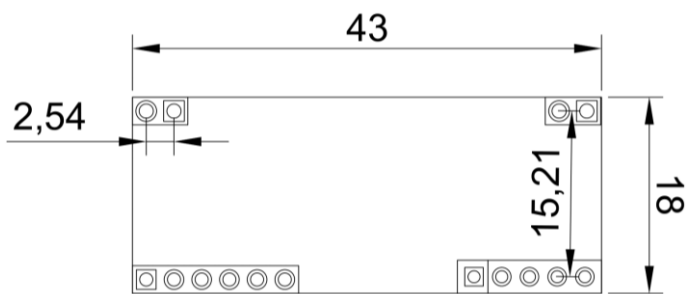
BOARD PINOUT DESCRIPTION

PINs	DESCRIPTION
1,5,12,13	NOT CONNECTED
2	CANBUS HIGH OUTPUT
3	CANBUS LOW OUTPUT
4	D+ DIFFERENTIAL OUTPUT
8	TTL/UART GND
9	TTL/UART RX
10	TTL/UART TX
11,15	(VCC) POWER SUPPLY: 5VDC OR 3.3VDC
NOTE	TTL level should match the connected VCC

SCHEMATIC DIAGRAM



DIMENSIONS (mm)



ORDERING INFORMATION

Part Number	Description
PMM0911	SPI to CANBUS Converter Module

CUSTOMIZED REQUIREMENT

For any customized inquiries and orders, contact us on info@Pmm-usa.us